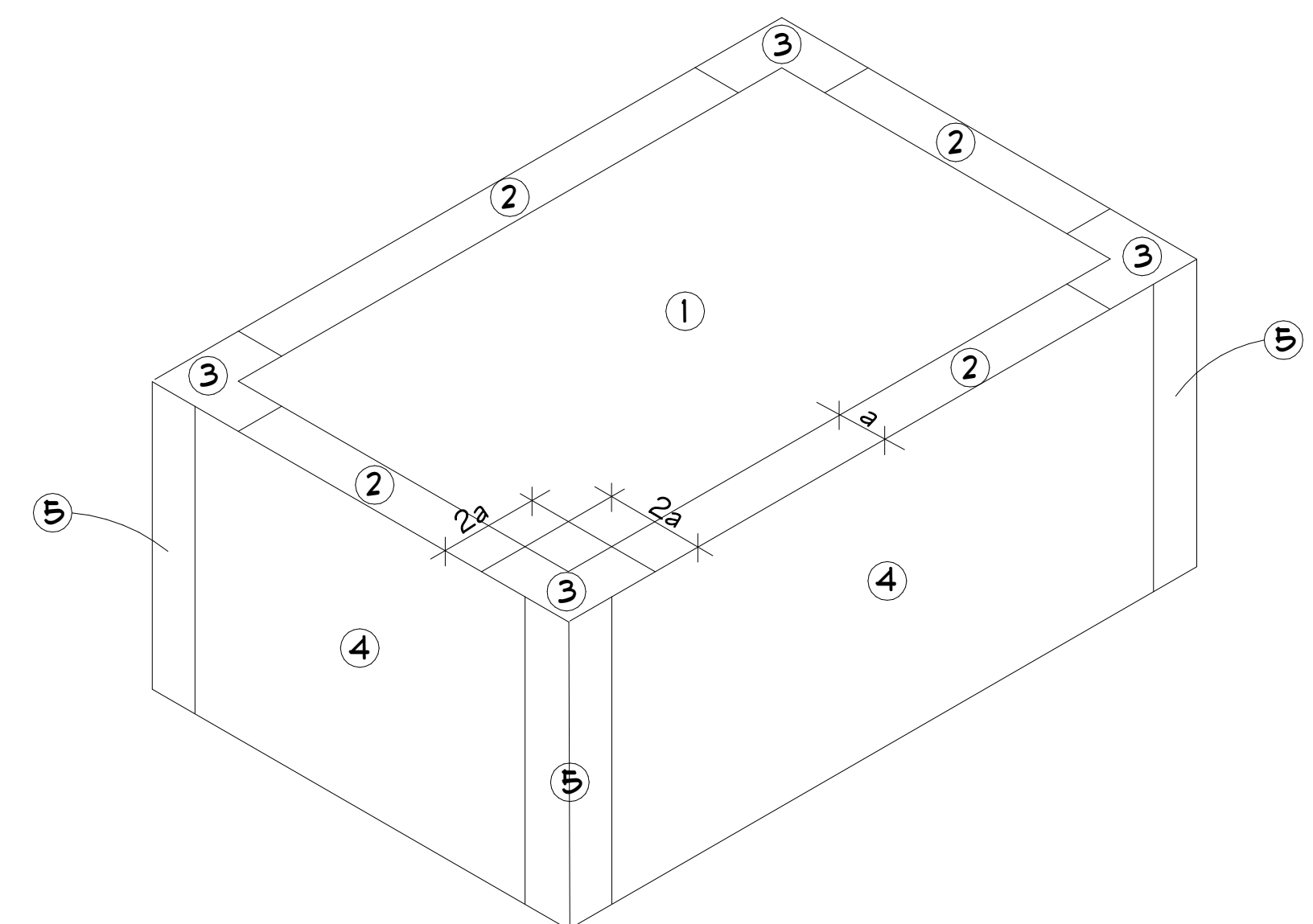


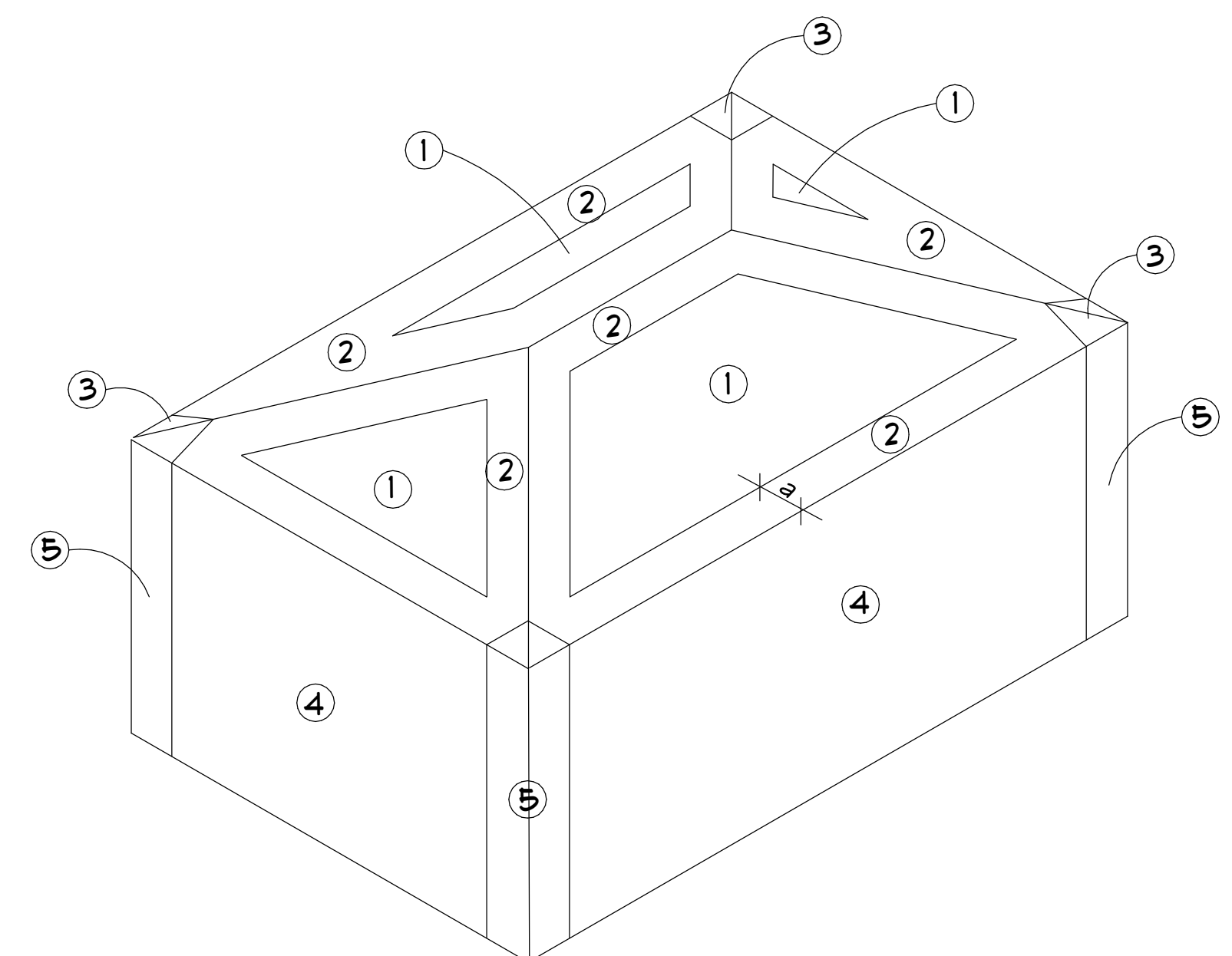
NORTH

A black arrow pointing upwards, enclosed within a black circle. The word "NORTH" is printed in capital letters above the circle.

MAIN WIND FORCE RESISTING SYSTEM PRESSURES						
ROOF		WALLS		LATERAL	PARAPET	
+16.0	-47.5	+34.3	-38.9	+55.5	+15.4	-50.2



3 WIND PRESSURE AREA DIAGRAM: FLAT ROOF
NOT TO SCALE



4 WIND PRESSURE AREA DIAGRAM: HIP ROOF
NOT TO SCALE

MHA - PALMS AT UNIVERSITY
APARTMENTS
PHASE II - BUILDING 1
585 E. UNIVERSITY BOULEVARD
MELBOURNE, FLORIDA 32901

ISSUED	
DATE:	ISSUED FOR:
12-29-11	BUILDING PERMIT

[illegible]

PROJECT NO:	15083.00
DRAWN BY:	KN
PROJECT MANAGER:	AW
CHECKED BY:	DJC
DATE:	12-29-11
SCALE:	AS NOTED

585 E. UNIVERSITY BOULEVARD

2-29-17	BUILDING PERMIT
---------	-----------------

SCALE: 1/16" = 1'-0"

BUILDING '1' - OVERALL
FOUNDATION & FIRST
FLOOR PLAN

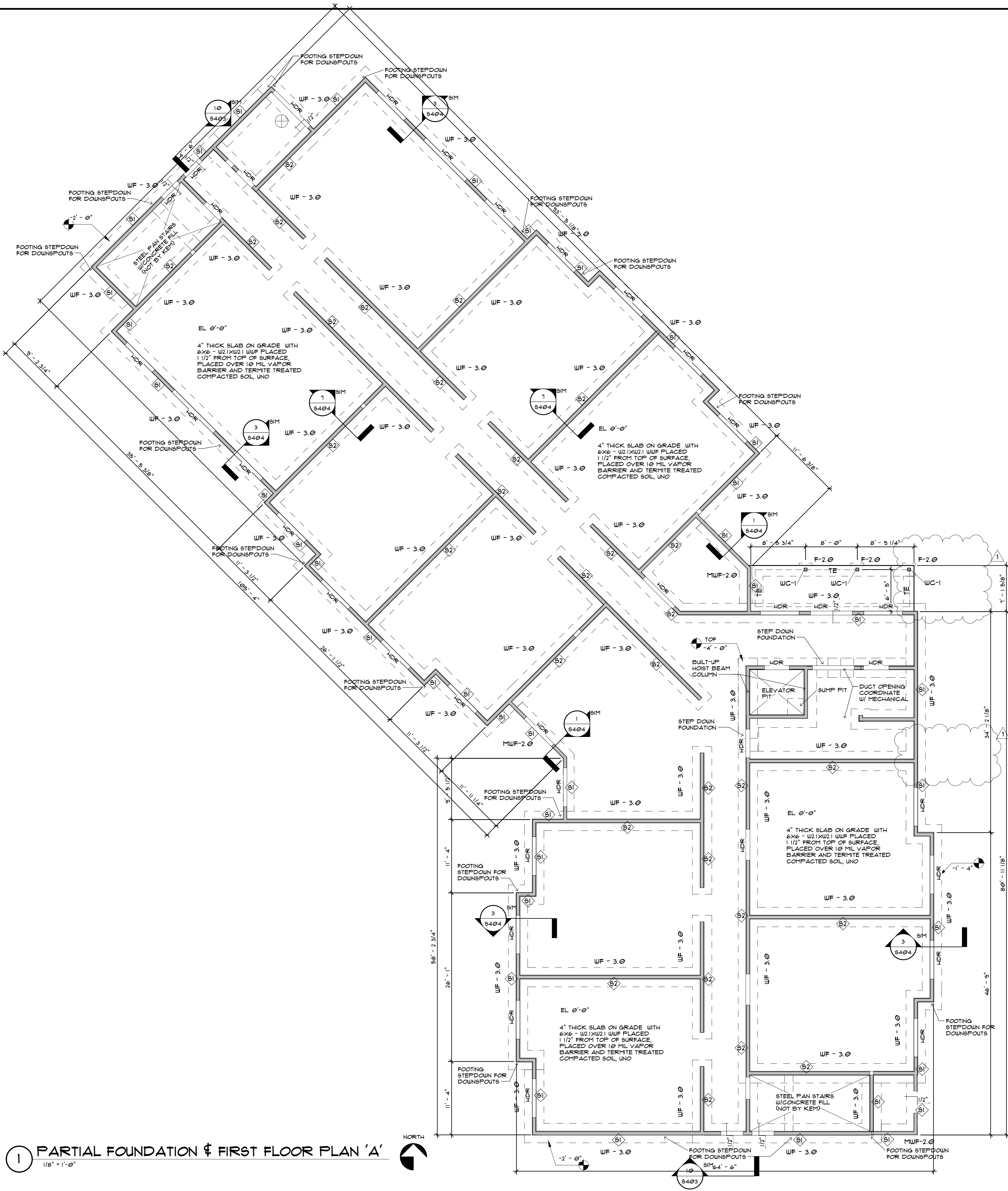


CONTRACTOR TO PROVIDE COMPLETE DRAWINGS, SPECIFICATIONS, & PRODUCT LITERATURE BY CERTIFIED & LICENSED ENGINEER FOR ENTIRE RADON GAS MITIGATION SYSTEM TO BE INSTALLED PER SPEC SECTION 07360. DRAWINGS TO BE SIGNED & SEALED BY LICENSED STATE OF FLORIDA ENGINEER. SYSTEM TO BE APPROVED BY ARCHITECT & OWNER. FINAL RADON REPORT DOCUMENTING POST-CONSTRUCTION TESTING BY CERTIFIED RADON PROFESSIONAL REQUIRED FOR FINAL ENDORSEMENT.

12/12/2018 3:41:00 PM

1 PARTIAL FOUNDATION & FIRST FLOOR PLAN 'A'

1/8" = 1'-0"



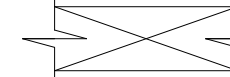
FOUNDATION PLAN NOTES:

GENERAL NOTES:

1. VERIFY DIMENSIONS & ELEVATIONS WITH ARCH. DRAWINGS BEFORE COMMENCING CONSTRUCTION. FOR DIMENSIONS NOT SHOWN, SEE OTHER STRUCTURAL DRAWINGS AND VERIFY W/ ARCH. DRAWINGS. DISCREPANCIES SHALL BE BROUGHT TO THE ATTENTION OF THE ARCHITECT OR THE STRUCTURAL ENGINEER.
2. SEE ARCHITECTURAL DRAWINGS FOR SLOPES, DROPS AND DRAIN LOCATIONS IN FLOOR SLAB.
3. GROUND FLOOR SHALL BE A 4" SLAB ON GRADE REINFORCED WITH W.U.F. AS SHOWN. PLANS PROVIDE CHAIRS AND SAND PLATES FOR SUPPORT.
4. ELEVATIONS SHOWN ON PLAN ARE IN REFERENCE TO TOP OF GROUND FLOOR ELEVATION OF 0'-0".
5. SEE S401 FOR GENERAL NOTES.
6. SEE S401 FOR FOOTING SCHEDULES.
7. SEE S402 FOR COLUMN SCHEDULES.
8. SEE S403, S404 & S405 FOR TYPICAL FOUNDATION DETAILS.
9. WF-# INDICATES A COLUMN SPREAD. SEE SCHEDULE ON S401.
10. WUF-# INDICATES A STEM WALL FOOTING. SEE SCHEDULE ON S401.
11. MUW-# INDICATES AN EXTERIOR MONOLITHIC WALL FOOTING. SEE SCHEDULE S401.
12. ENWUF-# INDICATES AN EXTERIOR MONOLITHIC WALL FOOTING. SEE SCHEDULE S401.
13. WALL FOOTINGS SHALL EXTEND BEYOND THE END OF WALLS A DISTANCE EQUAL TO HALF THE FOOTING WIDTH, UNO.
14. MC-# INDICATES A MASONRY COLUMN. SEE SCHEDULE ON S401.
15. TE INDICATES A THICKENED EDGE. SEE DETAILS ON S403.
16. FOUNDATION CONCRETE SHALL HAVE A 28 DAY COMPRESSIVE STRENGTH OF 3000 PSI MINIMUM.
- WOOD:
 1. REFERENCE SHEARWALL SCHEDULE ON SHEET S402 FOR SHEATHING, NAILING, TE DOWN, ETC.
 2. HDR HEADER (SEE HEADER SCHEDULE S401)



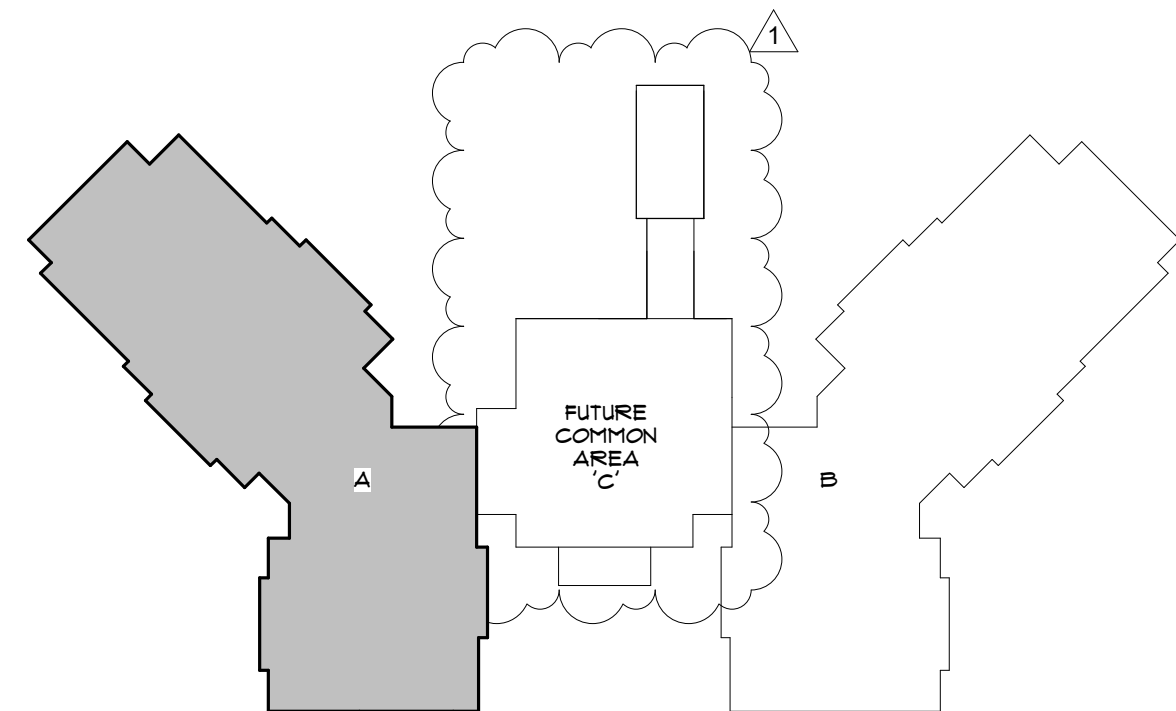
INDICATES 2x6 STUD FRAMING BEARING & SHEARWALL W/STUDS SPACED @ 16" O.C.



INDICATES MECH. DUCT PENETRATION THROUGH WALL COORDINATE WITH ARCH, MEP DRAWINGS



SHEAR WALL TYPE SEE SCHEDULE ON S402



KEY PLAN

BESSOLO
DESIGN GROUP, INC.
ARCHITECTURE ■ DEVELOPMENT
License #AA-C002117
7901 4TH ST. NORTH, SUITE 200
ST. PETERSBURG, FL 33702
727.894.4453 www.bessolo.com

KEM
ENGINEERS, INC.
License #EB-0007103
7901 4TH ST. NORTH, SUITE 200
ST. PETERSBURG, FL 33702
(727) 894-4668
PROFESSIONAL SEAL

DANIEL JAMES COOREY, P.E.
STATE OF FLORIDA 77065

© COPYRIGHT KEM ENGINEERS, INC.
THIS DRAWING AND ALL INFORMATION CONTAINED HEREIN, INCLUDING ALL
RELATED DIGITAL DRAWINGS OR FILES HEREON ARE THE EXCLUSIVE
PROPERTY OF KEM ENGINEERS, INC. SHALL NOT BE COPIED OR USED
IN ANY WAY WITHOUT THE EXPRESS WRITTEN CONSENT OF
KEM ENGINEERS, INC. AND MUST BE RETURNED UPON REQUEST.
NO PART OF THIS DRAWING MAY BE REPRODUCED OR TRANSMITTED IN ANY FORM OR BY ANY MEANS, ELECTRONIC OR MECHANICAL, FOR ANY PURPOSES UNLESS SO WRITTEN AND SIGNED BY DANIEL J. COOREY, P.E.

MHA - PALMS AT UNIVERSITY
APARTMENTS
PHASE 1 - BUILDING 1
585 E. UNIVERSITY BOULEVARD
MELBOURNE, FLORIDA 32901

ISSUED	
DATE:	ISSUED FOR:
12-29-17	BUILDING PERMIT

REVISIONS		
NO.	DATE	DESCRIPTION
1	12-13-18	VE CHANGES

PROJECT NO:	15093.00
DRAWN BY:	KN
PROJECT MANAGER:	AW
CHECKED BY:	DJG
DATE:	12-29-17
SCALE:	1/8" = 1'-0"

SIOIA
BUILDING 1 - PARTIAL
FOUNDATION & FIRST
FLOOR PLAN 'A'

1. VERIFY DIMENSIONS & ELEVATIONS WITH ARCH. DRAWINGS BEFORE COMMENCING CONSTRUCTION. FOR DIMENSIONS NOT SHOWN SEE OTHER STRUCTURAL DRAWINGS AND VERIFY WITH ARCH. DRAWINGS. DISCREPANCIES SHALL BE BROUGHT TO THE ATTENTION OF THE ARCHITECT OR THE STRUCTURAL ENGINEER.

2. SEE ARCHITECTURAL DRAWINGS FOR SLOPES, GROPS AND DRAIN LOCATIONS.

3. FLOOR SLAB

3.1. GROUND FLOOR SHALL BE A 4" SLAB ON GRADE REINFORCED WITH W.U.F. AS SHOWN ON PLANS. PROVIDE CHAIRS AND SAND PLATES FOR SUPPORT.

4. ELEVATIONS SHOWN ON PLAN ARE IN REFERENCE TO TOP OF GROUND FLOOR ELEVATION OF 0'-0".

5. SEE 5401 FOR GENERAL NOTES.

6. SEE 5401 FOR FOOTING SCHEDULES.

7. SEE 5402 FOR COLUMN SCHEDULES.

8. SEE 5403, 5404 & 5405 FOR TYPICAL FOUNDATION DETAILS

9. W-F INDICATES A COLUMN OR FOOTING. SEE SCHEDULE ON 5401.

10. W-F INDICATES A STEM WALL. FOOTING. SEE SCHEDULE ON 5401.

11. MUF- INDICATES AN EXTERIOR MONOLITHIC WALL FOOTING. SEE SCHEDULE 5401

12. W-F INDICATES AN EXTERIOR MONOLITHIC WALL FOOTING. SEE SCHEDULE 5401

13. WALL FOOTINGS SHALL EXTEND BEYOND THE END OF WALLS A DISTANCE EQUAL TO HALF THE FOOTING WIDTH, UNLESS

14. C- INDICATES A MASONRY COLUMN. SEE SCHEDULE ON 5401.

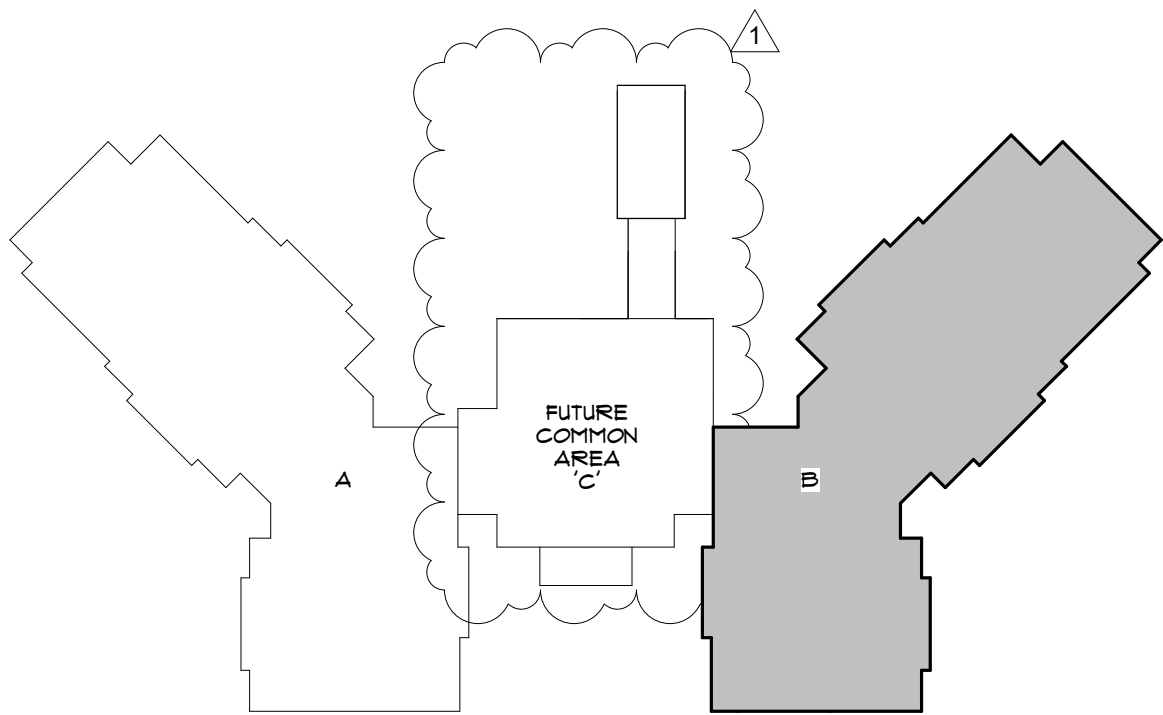
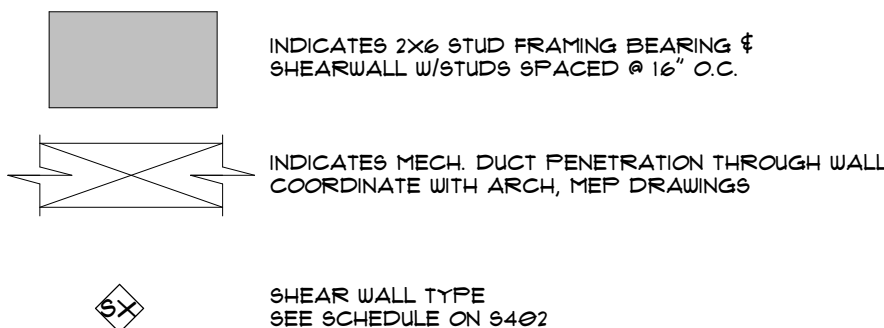
15. TE INDICATES A THICKENED EDGE. SEE DETAILS ON 5403.

16. FOUNDATION CONCRETE SHALL HAVE A 28 DAY COMPRESSIVE STRENGTH OF 3000 PSI MINIMUM.

WOOD:

1. REFERENCE SHEARWALL SCHEDULE ON SHEET 5402 FOR SHEATHING, NAILING, AND DOWN ETC.

2. HDR HEADER (SEE HEADER SCHEDULE 5401)



KEY PLAN

ISSUED	
DATE:	ISSUED FOR:
12-29-17	BUILDING PERMIT

[illegible]

PROJECT NO:	15083.00
DRAWN BY:	KN
PROJECT MANAGER:	AW
CHECKED BY:	DJC
DATE:	12-29-17
SCALE:	1/8" = 1'-0"

NORTH

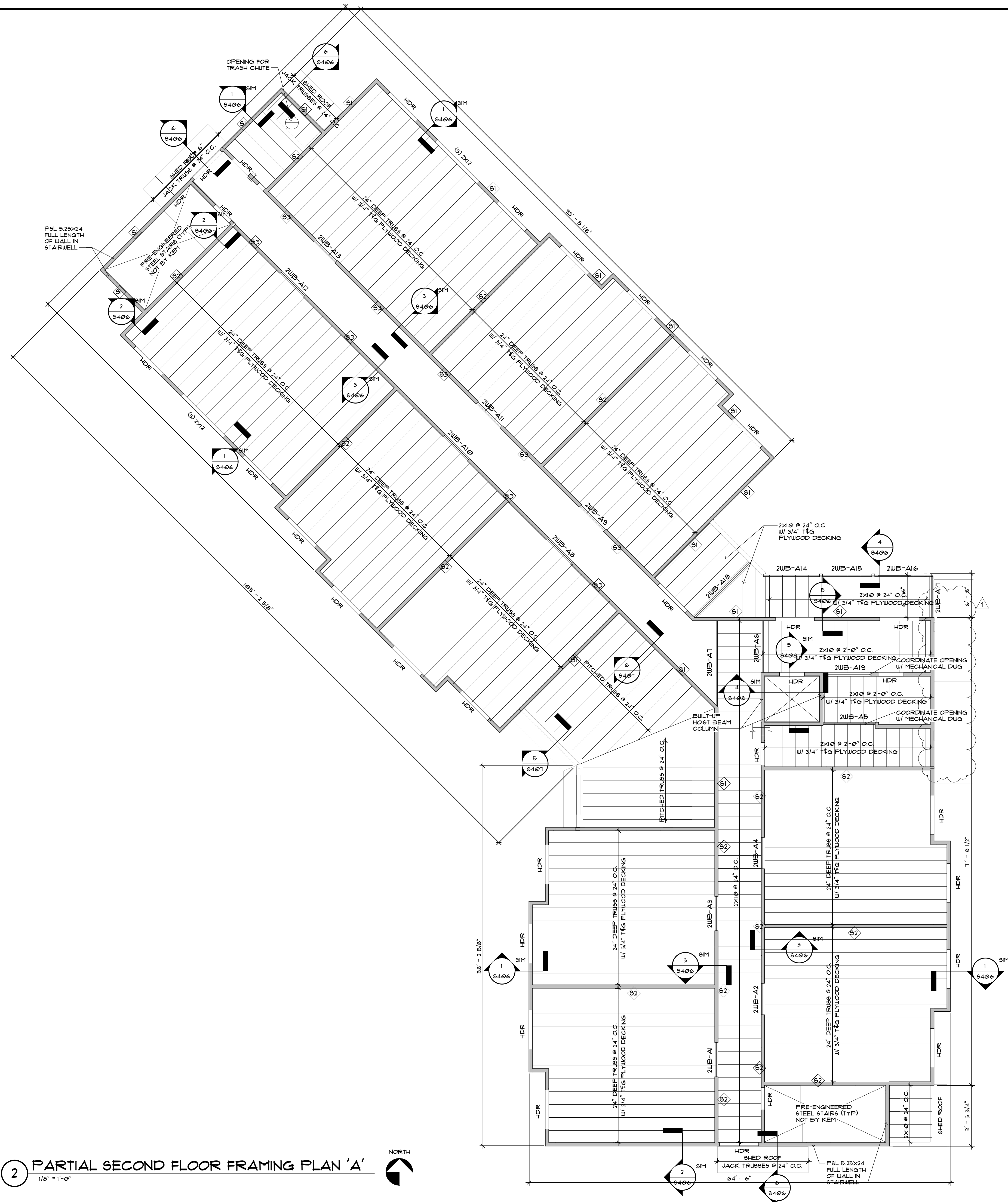

S102

BUILDING '1' - OVERALL
SECOND FLOOR
FRAMING PLAN

12/12/2018 3:41:02 PM

2 PARTIAL SECOND FLOOR FRAMING PLAN 'A'

1/8" = 1'-0"

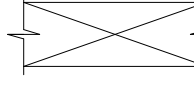


SECOND FLOOR FRAMING PLAN NOTES:

- GENERAL NOTES:
1. VERIFY DIMENSIONS & ELEVATIONS WITH ARCH. DRAWINGS BEFORE COMMENCING CONSTRUCTION. FOR DIMENSIONS NOT SHOWN SEE OTHER STRUCTURAL DRAWINGS AND VERIFY W/ ARCH. DRAWINGS. DISCREPANCIES SHALL BE BROUGHT TO THE ATTENTION OF THE ARCHITECT OR THE STRUCTURAL ENGINEER.
 2. SEE ARCHITECTURAL DRAWINGS FOR SLOPES, DROPS AND DRAIN LOCATIONS IN FLOOR SLABS.
 3. ELEVATIONS SHOWN ON PLAN ARE IN REFERENCE TO TOP OF GROUND FLOOR ELEVATION OF 0'-0".
 4. SEE S401 FOR GENERAL NOTES.
 5. SEE S401 FOR BEAM AND LINTEL SCHEDULES.
 6. SEE S402 FOR COLUMN SCHEDULES.
 7. SEE S404 FOR FRAMING DETAILS.
 8. W.B. INDICATES A WOOD BEAM. SEE SCHEDULE ON SHEET S401 FOR SIZE.
 9. W.C. INDICATES A WOOD COLUMN. SEE SCHEDULE ON SHEET S402.
 10. MC-# INDICATES A MASONRY COLUMN. SEE SCHEDULE ON S402.
- WOOD FRAMING:
1. SEE SHEET S401 FOR GENERAL WOOD TRUSS NOTES.
 2. WOOD TRUSSES SHALL BE DESIGNED BY A SPECIALTY ENGINEER RETAINED BY THE TRUSS SUPPLIER. THE TRUSS ENGINEER SHALL BE RESPONSIBLE FOR ALL TRUSS MEMBER TO TRUSS MEMBER CONNECTIONS.
 3. THE TRUSS ENGINEER SHALL SUBMIT, ALONG WITH THE SHOP DRAWINGS, THE TRUSS REACTIONS IMPOSED ONTO THE STRUCTURE.
 4. TRUSS ENGINEER SHALL ADHERE TO THE FRAMING SHOWN ON PLANS AS MUCH AS POSSIBLE IN ORDER TO KEEP THE LOAD DISTRIBUTION TO THE SUPPORTING STRUCTURE UNCHANGED.
 5. PROVIDE (2) 2X6XCONT. LEDGER ALONG WALLS AND BEAMS LOCATIONS AND 2X6XCONT. LEDGER AT SHEATHING BEARING, ALONG WALLS AND BEAMS (PARALLEL TO TRUSS).
 6. REFERENCE FOUNDATION PLAN FOR SHEARWALL DESIGNATIONS.
 7. REFERENCE SHEARWALL SCHEDULE ON SHEET S402 FOR SHEATHING, NAILING, TIE-DOWN, ETC.
 8. ENGINEERED WOOD BEAMS SHALL BE PARALLEL STRAND LUMBER (PSL).



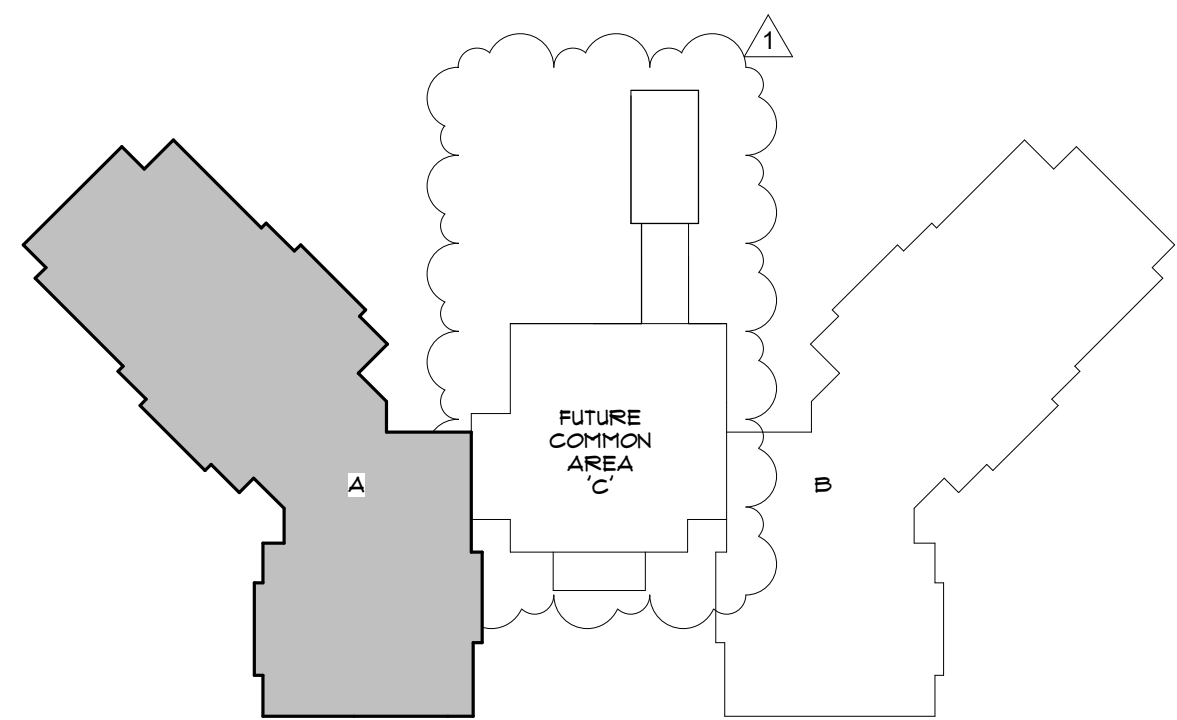
INDICATES 2X6 STUD FRAMING BEARING & SHEARWALL W/STUDS SPACED @ 16" O.C.



INDICATES MECH. DUCT PENETRATION THROUGH WALL COORDINATE WITH ARCH, MEP DRAWINGS



SHEAR WALL TYPE SEE SCHEDULE ON S402



KEY PLAN

BESSOLO
DESIGN GROUP, INC.
ARCHITECTURE ■ DEVELOPMENT
License #AA-C002117
7901 4TH ST. NORTH, SUITE 200
ST. PETERSBURG, FL 33702
727.894.4453 www.bessolo.com

KEM
ENGINEERS, INC.
License #EB-0007103
7901 4TH ST. NORTH, SUITE 200
ST. PETERSBURG, FL 33702
(727) 894-4668
PROFESSIONAL SEAL

DANIEL JAMES COOREY, P.E.
STATE OF FLORIDA 77065
© COPYRIGHT KEM ENGINEERS, INC.
THIS DRAWING AND ALL INFORMATION CONTAINED HEREIN, INCLUDING ALL
RELATED DIGITAL DRAWINGS OR FILES HEREON ARE THE EXCLUSIVE
PROPERTY OF KEM ENGINEERS, INC. SHALL NOT BE COPIED OR USED
IN ANY WAY WITHOUT THE EXPRESS WRITTEN CONSENT OF
KEM ENGINEERS, INC. AND MUST BE RETURNED UPON REQUEST.
THIS DRAWING AND ALL INFORMATION CONTAINED HEREIN ARE FOR CONSTRUCTION
PURPOSES UNLESS SHOWN AND SEALED BY DANIEL J. COOREY, P.E.

MHA - PALMS AT UNIVERSITY
APARTMENTS
PHASE 1 - BUILDING 1
585 E. UNIVERSITY BOULEVARD
MELBOURNE, FLORIDA 32901

ISSUED	
DATE:	ISSUED FOR:
12-29-17	BUILDING PERMIT

REVISIONS		
NO.	DATE	DESCRIPTION
1	12-13-18	VE CHANGES

PROJECT NO:	15093.00
DRAWN BY:	KN
PROJECT MANAGER:	AW
CHECKED BY:	DJC
DATE:	12-29-17
SCALE:	1/8" = 1'-0"

S102A
BUILDING '1' - PARTIAL
SECOND FLOOR
FRAMING PLAN 'A'

MHA - PALMS AT UNIVERSITY
APARTMENTS
PHASE II - BUILDING I
585 E. UNIVERSITY BOULEVARD
MELBOURNE, FLORIDA 32901

PHASE II - BUILDING I

585 E. UNIVERSITY BOULEVARD
MELBOURNE, FLORIDA 32901

ISSUED

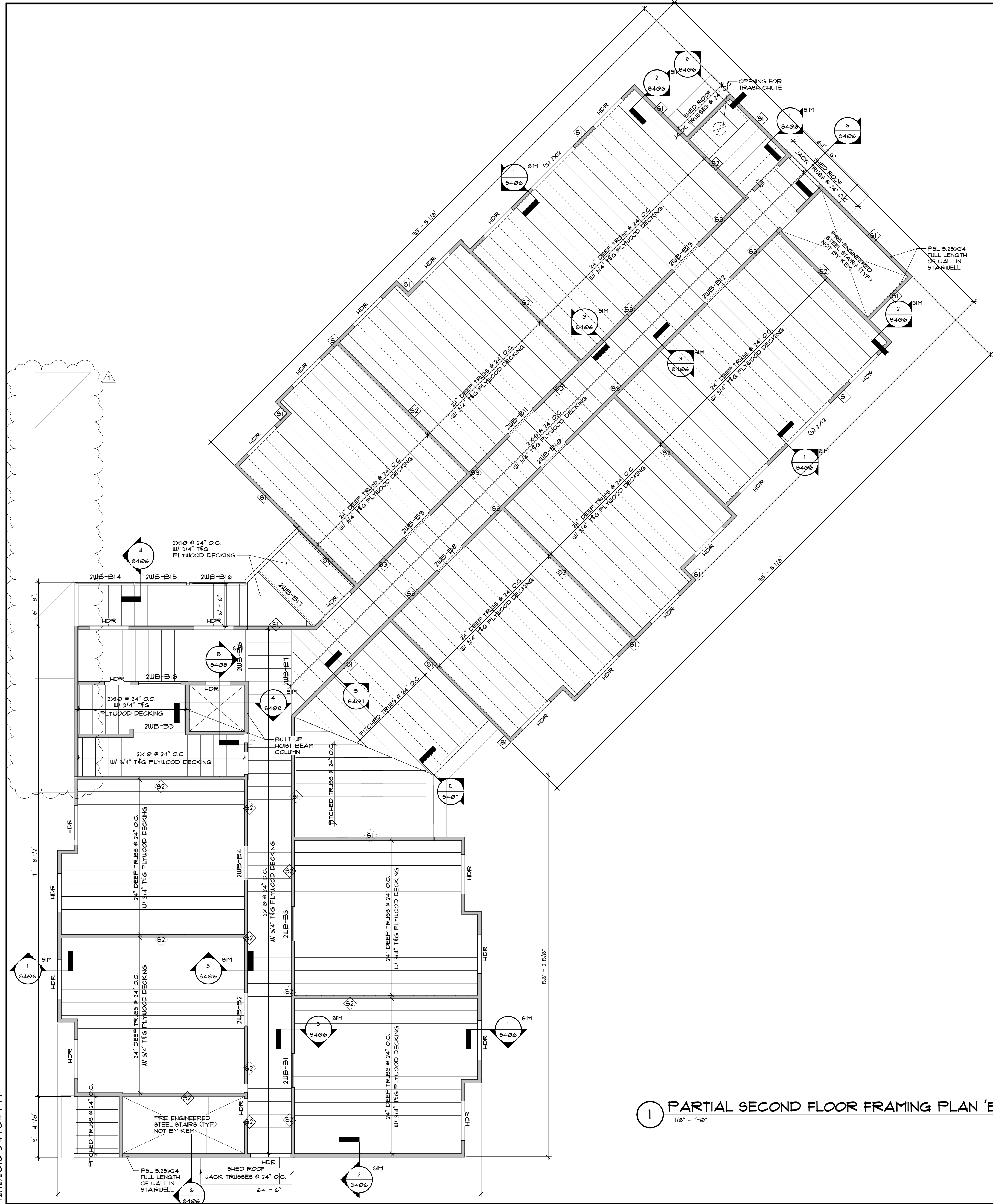
DATE:	ISSUED FOR:
2-29-17	BUILDING PERMIT

[illegible]

PROJECT NO: 15083.00
DRAWN BY: KN
PROJECT MANAGER: AW
CHECKED BY: DJC
DATE: 12-29-17
SCALE: 1/8" = 1'-0"

S102B

BUILDING '1' - PARTIAL
SECOND FLOOR
FRAMING PLAN 'B'




SECOND FLOOR FRAMING PLAN NOTES:

GENERAL NOTES:
1. VERIFY DIMEN

1. VERIFY DIMENSIONS & ELEVATIONS WITH ARCH. DRAWINGS BEFORE CONSTRUCTION. CORRECT ANY DISCREPANCIES BEFORE OTHER STRUCTURAL DRAWINGS AND VERIFY W/ ARCH DRAWINGS. DISCREPANCIES SHALL BE BROUGHT TO THE ATTENTION OF THE ARCHITECT OR ARCHITECTURAL ENGINEER.
 2. SEE ARCHITECTURAL DRAWINGS FOR SLOPES, DROPS AND DRAIN LOCATIONS IN GENERAL.
 3. ELEVATIONS SHOWN ON PLAN ARE IN REFERENCE TO TOP OF GROUND FLOOR ELEVATION OF 0'-0".
 4. SEE S401 FOR GENERAL NOTES.
 5. SEE S401 FOR BEAM AND Lintel SCHEDULES.
 6. SEE S403 FOR PARTIAL WOOD CONNECTION SCHEDULE ON S402.
 7. SEE S404 FOR FRAMING DETAILS.
 8. WD+ INDICATES A WOOD BEAM. SEE SCHEDULE ON SHEET S401 FOR SIZE AND CONNECTION. WOOD CONNECTIONS SEE SCHEDULE ON S402.
 9. MC+ INDICATES A MASONRY SCHEDULE. SEE SCHEDULE ON S402.
- WOOD TRUSSES**
1. SEE SHEET S4091 FOR GENERAL WOOD TRUSS NOTES.
 2. WOOD TRUSSES SHALL BE DESIGNED BY A SPECIALTY ENGINEER RETAINED BY THE ARCHITECT. THE SPECIALTY ENGINEER SHALL BE RESPONSIBLE FOR ALL TRUSS MEMBER TO TRUSS MEMBER CONNECTIONS.
 3. SEE ARCHITECTURAL DRAWINGS FOR TRUSS LOCATIONS. THE TRUSS REVISIONS IMPOSED UPON THE STRUCTURE.
 4. TRUSS ENGINEER SHALL ADDRESS TO THE TRUSSING SHOWN ON PLANS AS MUCH AS POSSIBLE TO KEEP THE LOAD DISTRIBUTION TO THE SUPPORTING STRUCTURE UNCHANGED.
 5. SEE ARCHITECTURAL DRAWINGS FOR BEAMS AND BEAMS LOCATIONS AND 2x6x12x12 LEDGER AT SHEATHING BEARING, ALONG WALLS AND PARTIAL TRUSS CONNECTIONS.
 6. REFERENCE FOUNDATION PLAN FOR SHEARWALL DESIGNATIONS.
 7. REFERENCE SHEARWALL SCHEDULE ON SHEET S402 FOR SHEATHING, PARTIAL TRUSS CONNECTIONS.
 8. ENGINEERED WOOD BEAMS SHALL BE PARALLEL STRAND LUMBER (PSL)

INDICATES 2X6 STUD FRAMING BEARING \$
SHEARWALL W/STUDS SPACED @ 16" O.C.

 INDICATES MECH. DUCT PENETRATION THROUGH WALL
COORDINATE WITH ARCH, MEP DRAWINGS

 SHEAR WALL TYPE
SEE SCHEDULE ON 9402

1 PARTIAL SECOND FLOOR FRAMING PLAN 'B'

NORTH

KEY PLAN

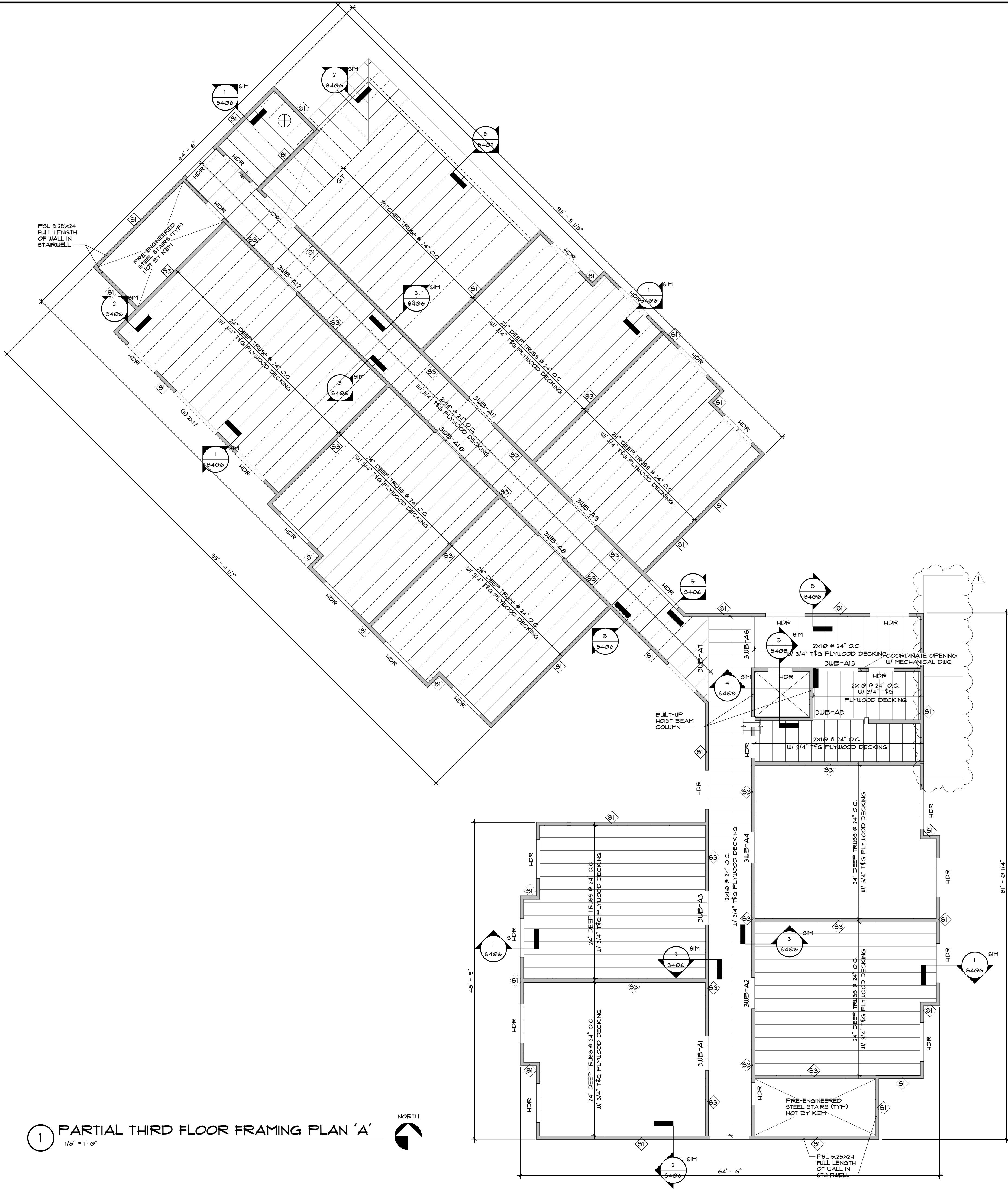
12/12/2018 3:47:04 PM

NORTH

12/12/2018 3:23:13 PM

1 PARTIAL THIRD FLOOR FRAMING PLAN 'A'

1/8" = 1'-0"

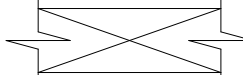


THIRD FLOOR FRAMING PLAN NOTES:

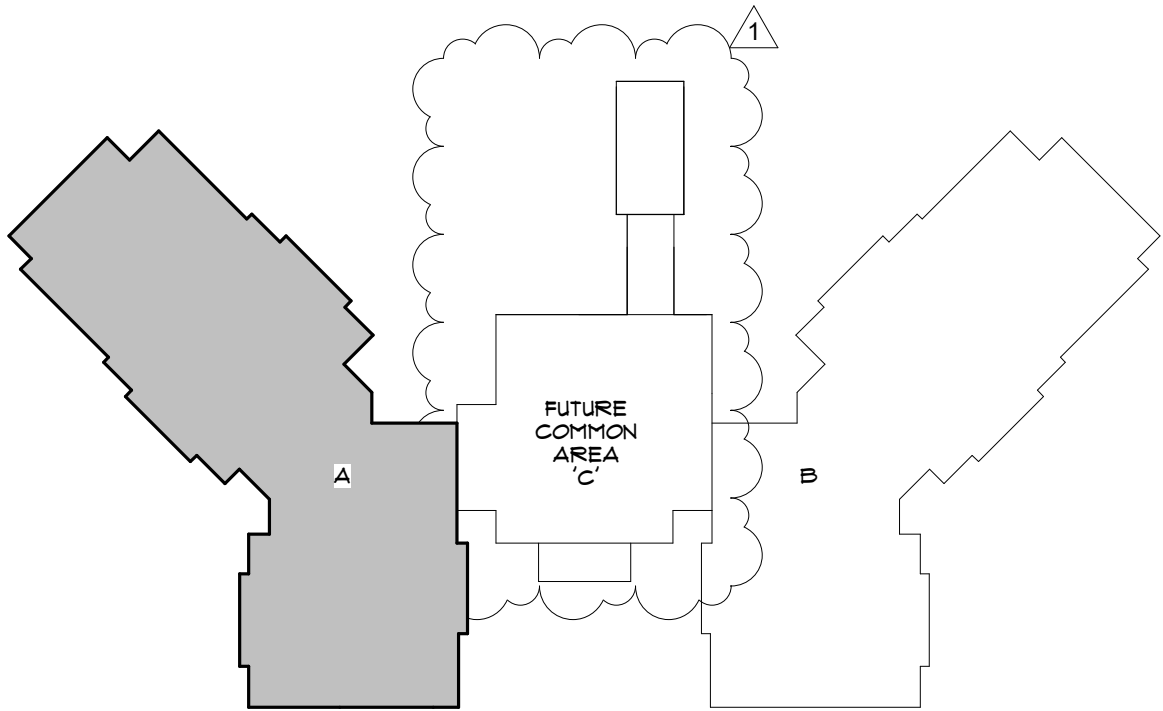
- GENERAL NOTES:
1. VERIFY DIMENSIONS & ELEVATIONS WITH ARCH. DRAWINGS BEFORE COMMENCING CONSTRUCTION. FOR DIMENSIONS NOT SHOWN SEE OTHER STRUCTURAL DRAWINGS AND VERIFY W/ ARCH. DRAWINGS. DISCREPANCIES SHALL BE BROUGHT TO THE ATTENTION OF THE ARCHITECT OR THE STRUCTURAL ENGINEER.
 2. SEE ARCHITECTURAL DRAWINGS FOR SLOPES, DROPS AND DRAIN LOCATIONS IN FLOOR SLAB.
 3. ELEVATIONS SHOWN ON PLAN ARE IN REFERENCE TO TOP OF GROUND FLOOR ELEVATION OF 0'-0".
 4. SEE S401 FOR GENERAL NOTES.
 5. SEE S401 FOR BEAM AND INTEL. SCHEDULES.
 6. SEE S402 FOR COLUMN SCHEDULES.
 7. SEE S404 FOR FRAMING DETAILS.
 8. W.B. INDICATES A WOOD BEAM. SEE SCHEDULE ON SHEET S401 FOR SIZE.
 9. U.C. INDICATES A WOOD COLUMN. SEE SCHEDULE ON S402.
 10. M.C. # INDICATES A MASONRY COLUMN. SEE SCHEDULE ON S402.
- WOOD FRAMING:
1. SEE SHEET S401 FOR GENERAL WOOD TRUSS NOTES.
 2. WOOD TRUSSES SHALL BE DESIGNED BY A SPECIALTY ENGINEER. RETAINED BY THE TRUSS SUPPLIER. THE TRUSS ENGINEER SHALL BE RESPONSIBLE FOR ALL TRUSS MEMBER TO TRUSS MEMBER CONNECTIONS.
 3. THE TRUSS ENGINEER SHALL SUBMIT, ALONG WITH THE SHOP DRAWINGS, THE TRUSS REACTIONS IMPOSED ONTO THE STRUCTURE.
 4. TRUSS ENGINEER SHALL ADHERE TO THE FRAMING SHOWN ON PLANS AS MUCH AS POSSIBLE IN ORDER TO KEEP THE LOAD DISTRIBUTION TO THE SUPPORTING STRUCTURE UNCHANGED.
 5. PROVIDE (2) 2X6XCONT. LEDGER ALONG WALLS AND BEAMS LOCATIONS AND 2X6XCONT. LEDGER AT SHEATHING BEARING, ALONG WALLS AND BEAMS (PARALLEL TO TRUSSES).
 6. REFERENCE FOUNDATION PLAN FOR SHEATHING DESIGNATIONS, NAILING, TIE-DOWN, ETC.
 8. ENGINEERED WOOD BEAMS SHALL BE PARALLEL STRAND LUMBER (PSL).



INDICATES 2X6 STUD FRAMING BEARING & SHEATHING W/ STUDS SPACED @ 16" O.C.



INDICATES MECH. DUCT PENETRATION THROUGH WALL COORDINATE WITH ARCH. MEP DRAWINGS



KEY PLAN

BESSOLO
DESIGN GROUP, INC.
ARCHITECTURE ■ DEVELOPMENT
License #AA-C002117
7901 4TH ST. NORTH, SUITE 200
ST. PETERSBURG, FL 33702
727.894.4453 www.bessolo.com

KEM
ENGINEERS, INC.
License #EB-0007103
7901 4TH ST. NORTH, SUITE 200
ST. PETERSBURG, FL 33702
(727) 894-4668
PROFESSIONAL SEAL

DANIEL JAMES COOREY, P.E.
STATE OF FLORIDA 77065

© COPYRIGHT KEM ENGINEERS, INC.
THIS DRAWING AND ALL INFORMATION CONTAINED HEREIN, INCLUDING ALL
RELATED DIGITAL DATA, ARE THE PROPERTY OF KEM ENGINEERS, INC. AND NOT TO BE COPIED OR USED
IN ANY WAY WITHOUT THE EXPRESS WRITTEN CONSENT OF
KEM ENGINEERS, INC. AND MUST BE RETURNED UPON REQUEST.
THIS DRAWING AND ALL INFORMATION CONTAINED HEREIN ARE FOR CONSTRUCTION
PURPOSES UNLESS INDICATED OTHERWISE BY DANIEL J. COOREY, P.E.

MHA - PALMS AT UNIVERSITY
APARTMENTS
PHASE 1 - BUILDING 1
585 E. UNIVERSITY BOULEVARD
MELBOURNE, FLORIDA 32901

ISSUED	
DATE:	ISSUED FOR:
12-29-17	BUILDING PERMIT

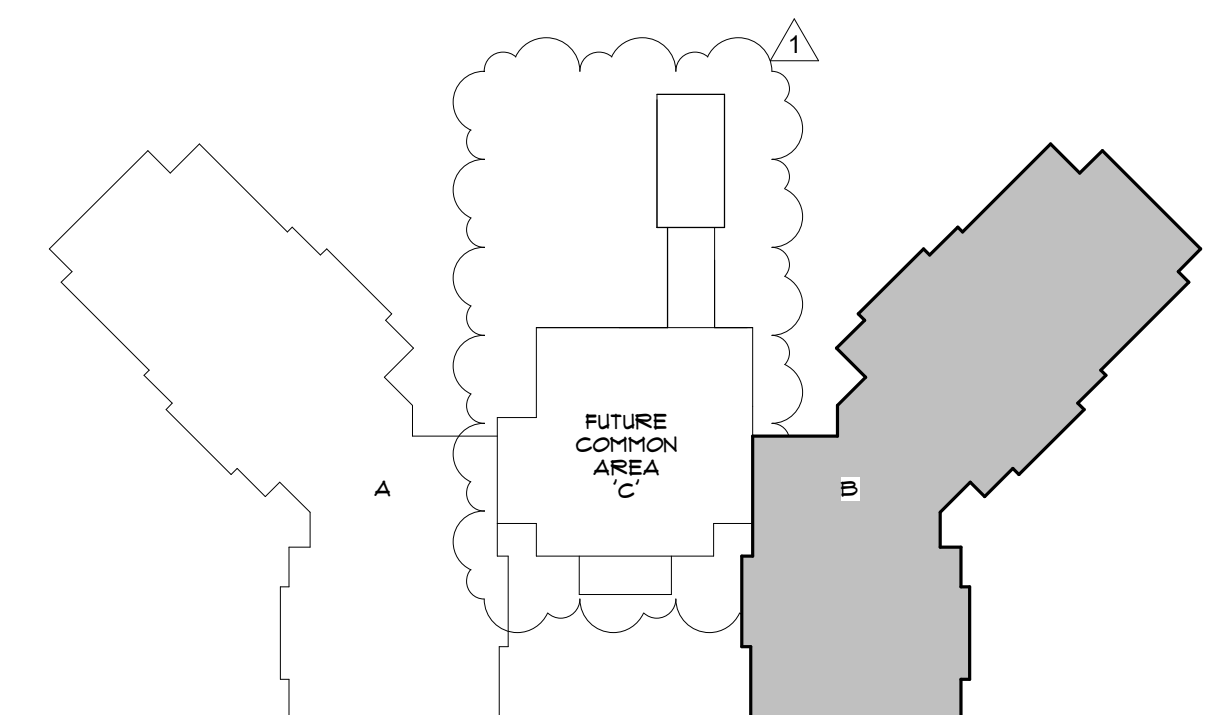
REVISIONS		
NO.	DATE	DESCRIPTION
1	12-13-18	VE CHANGES

PROJECT NO:	15093.00
DRAWN BY:	KN
PROJECT MANAGER:	AW
CHECKED BY:	DJC
DATE:	12-29-17
SCALE:	1/8" = 1'-0"

S103A
BUILDING '1' - PARTIAL
THIRD FLOOR FRAMING
PLAN 'A'

INDICATES 2X6 STUD FRAMING BEARING $\frac{1}{2}$ SHEARWALL W/ STUDS SPACED @ 16" O.C.

INDICATES MECH. DUCT PENETRATION THROUGH WALL COORDINATE WITH ARCH, MEP DRAWINGS



KEY PLAN

BESSOLO
DESIGN GROUP, INC.
ARCHITECTURE ■ DEVELOPMENT
License #AA-C002117
7901 4TH ST. NORTH, SUITE 200
ST. PETERSBURG, FL 33702
727.894.4453 www.bessolo.com

KEM
ENGINEERS, INC.
License #EB-0007103
7901 4TH ST. NORTH, SUITE 200
ST. PETERSBURG, FL 33702
(727) 894-4668
PROFESSIONAL SEAL

**MHA - PALMS AT UNIVERSITY
APARTMENTS
PHASE II - BUILDING 1**

**555 E. UNIVERSITY BOULEVARD
MELBOURNE, FLORIDA 32901**

ISSUED	
DATE:	ISSUED FOR:
2-29-11	BUILDING PERMIT

[illegible]

PROJECT NO:	15003.00
DRAWN BY:	KN
PROJECT MANAGER:	AW
CHECKED BY:	DJC
DATE:	12-29-11
SCALE:	1/8" = 1'-0"

S103B

BUILDING '1' - PARTIAL
THIRD FLOOR FRAMING
PLAN 'B'

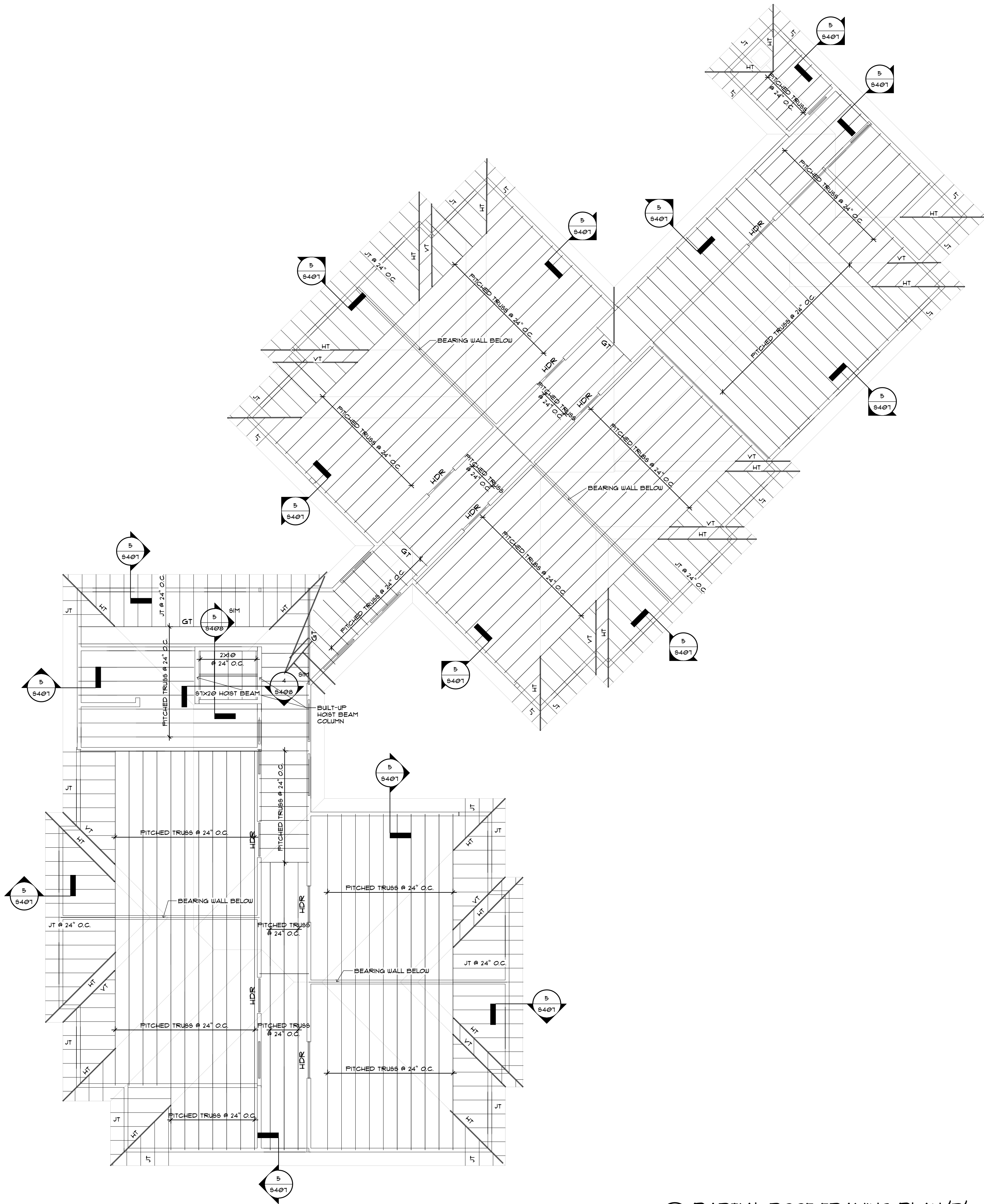
NORTH

A simple black arrow pointing upwards, enclosed within a circle, indicating the orientation of the map.

S104

BUILDING '1' - OVERALL
ROOF FRAMING PLAN

12/12/2018 9:56:03 AM



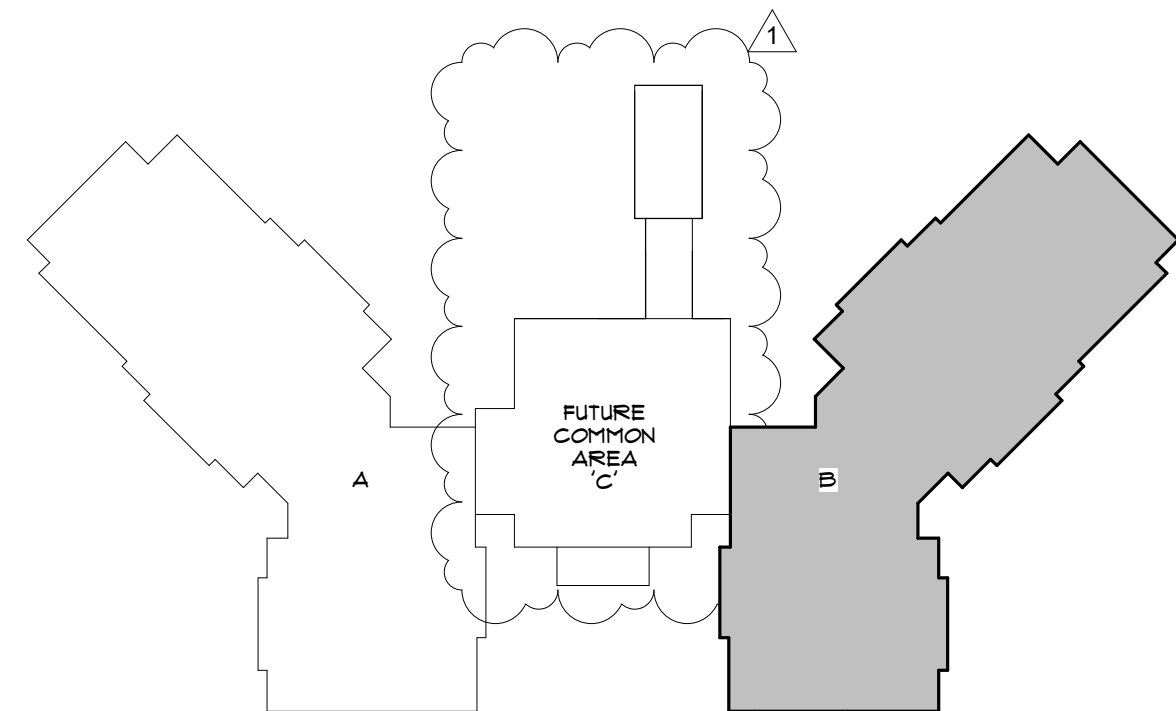
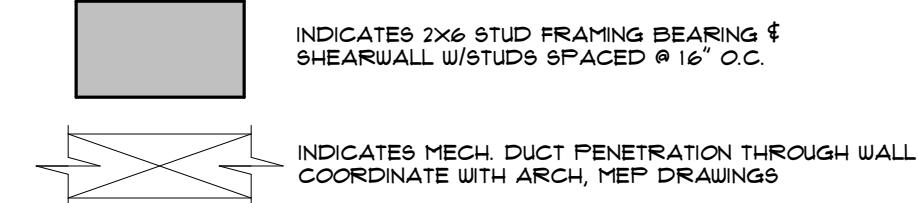
1 PARTIAL ROOF FRAMING PLAN 'B'
1/8" = 1'-0"



ROOF FRAMING PLAN NOTES:

- GENERAL NOTES:
1. VERIFY DIMENSIONS & ELEVATIONS WITH ARCH. DRAWINGS BEFORE COMMENCING CONSTRUCTION. FOR DIMENSIONS NOT SHOWN SEE OTHER STRUCTURAL DRAWINGS AND VERIFY W/ ARCH. DRAWINGS. DISCREPANCIES SHALL BE BROUGHT TO THE ATTENTION OF THE ARCHITECT OR THE STRUCTURAL ENGINEER.
 2. SEE ARCHITECTURAL DRAWINGS FOR SLOPES, DROPS AND DRAIN LOCATIONS IN FLOOR SLAB.
 3. ELEVATIONS SHOWN ON PLAN ARE IN REFERENCE TO TOP OF GROUND FLOOR ELEVATION OF 0'-0".
 4. SEE S401 FOR GENERAL NOTES.
 5. SEE S401 FOR BEAM AND INTEL SCHEDULES.
 6. SEE S402 FOR COLUMN SCHEDULES.
 7. SEE S404 FOR FRAMING DETAILS.
 8. W.B. INDICATES A WOOD BEAM. SEE SCHEDULE ON SHEET S401 FOR SIZE.
 9. W.C. INDICATES A WOOD COLUMN. SEE SCHEDULE ON S402.
 10. MC-# INDICATES A MASONRY COLUMN. SEE SCHEDULE ON S402.
- WOOD FRAMING:
1. SEE SHEET S401 FOR GENERAL WOOD TRUSS NOTES.
 2. WOOD TRUSSES SHALL BE DESIGNED BY A SPECIALTY ENGINEER RETAINED BY THE TRUSS SUPPLIER. THE TRUSS ENGINEER SHALL BE RESPONSIBLE FOR ALL TRUSS MEMBER TO TRUSS MEMBER CONNECTIONS.
 3. THE TRUSS ENGINEER SHALL SUBMIT, ALONG WITH THE SHOP DRAWINGS, THE TRUSS REACTIONS IMPOSED ONTO THE STRUCTURE.
 4. TRUSS ENGINEERS SHALL ADHERE TO THE FRAMING SHOWN ON PLANS AS MUCH AS POSSIBLE IN ORDER TO KEEP THE LOAD DISTRIBUTION TO THE SUPPORTING STRUCTURE UNCHANGED.
 5. PROVIDE (2) 2x4x8x10. LEDGER ALONG WALLS AND BEAMS LOCATIONS AND 2x4x8x10. LEDGER AT SHEATHING BEARING, ALONG WALLS AND BEAMS (PARALLEL TO TRUSSES).
 6. REFERENCE FOUNDATION PLAN FOR SHEARWALL DESIGNATIONS.
 7. REFERENCE SHEARWALL SCHEDULE ON SHEET S402 FOR SHEATHING, NAILING, TIE-DOWN, ETC.
 8. ENGINEERED WOOD BEAMS SHALL BE PARALLEL STRAND LUMBER (PSL).

JT INDICATES JACK TRUSS
VT INDICATES VALLEY TRUSS
GT INDICATES GIDER TRUSS
HDR INDICATES HEADER



KEY PLAN

BESSOLO
DESIGN GROUP, INC.
ARCHITECTURE ■ DEVELOPMENT
License #AA-C002117
7901 4TH ST. NORTH, SUITE 200
ST. PETERSBURG, FL 33702
727.894.4453 www.bessolo.com

KEM
ENGINEERS, INC.
License #EB-0007103
7901 4TH ST. NORTH, SUITE 200
ST. PETERSBURG, FL 33702
(727) 894-4668
PROFESSIONAL SEAL

DANIEL JAMES COOREY, P.E.
STATE OF FLORIDA 77065

© COPYRIGHT KEM ENGINEERS, INC.
THIS DRAWING AND ALL INFORMATION CONTAINED HEREIN, INCLUDING ALL
RELATED DIGITAL DRAWINGS OR FILES HEREIN ARE THE EXCLUSIVE
PROPERTY OF KEM ENGINEERS, INC. SHALL NOT BE COPIED OR USED
IN ANY WAY WITHOUT THE EXPRESS WRITTEN CONSENT OF
KEM ENGINEERS, INC. AND MUST BE RETURNED UPON REQUEST.
FOR INFORMATION AND RECORD ONLY. NOT FOR CONSTRUCTION.
PURPOSES UNLESS SIGNED AND SEALED BY DANIEL J. COOREY, P.E.

MHA - PALMS AT UNIVERSITY
APARTMENTS
PHASE 1 - BUILDING 1
585 E. UNIVERSITY BOULEVARD
MELBOURNE, FLORIDA 32901

ISSUED	
DATE:	ISSUED FOR:
12-29-17	BUILDING PERMIT

REVISIONS		
NO.	DATE	DESCRIPTION
1	12-13-18	VE CHANGES

PROJECT NO.	15093.00
DRAWN BY:	KN
PROJECT MANAGER:	AW
CHECKED BY:	DJC
DATE:	12-29-17
SCALE:	1/8" = 1'-0"

S104B
BUILDING '1' - PARTIAL
ROOF FRAMING PLAN
'B'

BAR	SIZE	LAP CLASS	FC = 3,000 FSI				FC = 4,000 FSI				FC = 5,000 FSI			
			TOP BARS		OTHER BARS		TOP BARS		OTHER BARS		TOP BARS		OTHER BARS	
			CASE 1	CASE 2	CASE 1	CASE 2	CASE 1	CASE 2	CASE 1	CASE 2	CASE 1	CASE 2	CASE 1	CASE 2
#3	A		22	32	17	35	19	28	15	22	17	25	13	19
		B	28	42	22	32	24	36	19	28	22	33	17	25
#4	A		29	43	22	33	25	37	19	29	22	33	17	26
		B	37	56	29	43	32	48	25	37	29	43	22	33
#5	A		36	54	28	41	31	47	24	36	28	42	22	32
		B	47	70	36	54	40	60	31	47	36	54	28	42
#6	A		43	64	33	50	37	56	29	43	33	50	26	38
		B	56	84	43	64	48	72	37	56	43	65	33	50
#7	A		63	94	48	72	54	81	42	63	49	73	37	56
		B	81	122	64	94	70	106	63	81	63	94	49	73
#8	A		72	107	55	82	62	93	48	72	55	83	43	64
		B	93	139	72	107	80	121	62	93	72	108	55	83
#9	A		81	121	62	93	70	105	54	81	63	94	48	72
		B	105	157	81	121	91	136	70	105	81	122	63	94
#10	A		91	136	70	105	79	118	61	91	70	105	54	81
		B	118	177	91	136	102	153	79	118	91	137	70	105
#11	A		101	151	78	116	87	131	67	101	78	117	60	90
		B	131	196	101	151	113	170	87	131	101	152	78	117
#14	N/A		121	181	93	139	105	157	81	121	94	140	72	108
#18	N/A		161	241	124	186	139	209	107	161	125	187	96	144

WOOD BEAM SCHEDULE		
Mark	Family and Type	Description

2WB-A1	Dimension Lumber: 2x12 (3)	SYP #1
2WB-A2	Dimension Lumber: 2x12 (3)	SYP #1
2WB-A3	Dimension Lumber: 2x12 (3)	SYP #1
2WB-A4	Dimension Lumber: 2x12 (3)	SYP #1
2WB-A5	LVL-Laminated Veneer Lumber: (2) 3/4 x 9 1/4	FLUSH
2WB-A6	Dimension Lumber: 2x12 (2)	SYP #1
2WB-A7	Dimension Lumber: 2x12 (3)	SYP #1
2WB-A8	Dimension Lumber: 2x12 (3)	SYP #1
2WB-A9	Dimension Lumber: 2x12 (3)	SYP #1
2WB-A10	Dimension Lumber: 2x12 (3)	SYP #1
2WB-A11	Dimension Lumber: 2x12 (3)	SYP #1
2WB-A12	Dimension Lumber: 2x12 (3)	SYP #1
2WB-A13	Dimension Lumber: 2x12 (3)	SYP #1
2WB-A14	Dimension Lumber: 2x10 (2)	
2WB-A15	Dimension Lumber: 2x10 (2)	
2WB-A16	Dimension Lumber: 2x10 (2)	
2WB-A17	Dimension Lumber: 2x12 (2)	
2WB-A18	Dimension Lumber: 2x10 (2)	
2WB-A19	LVL-Laminated Veneer Lumber: (2) 3/4 x 9 1/4	FLUSH
2WB-B1	Dimension Lumber: 2x12 (3)	SYP #1
2WB-B2	Dimension Lumber: 2x12 (3)	SYP #1
2WB-B3	Dimension Lumber: 2x12 (3)	SYP #1
2WB-B4	Dimension Lumber: 2x12 (3)	SYP #1
2WB-B5	LVL-Laminated Veneer Lumber: (2) 3/4 x 9 1/4	FLUSH
2WB-B6	Dimension Lumber: 2x12 (2)	
2WB-B7	Dimension Lumber: 2x12 (3)	SYP #1
2WB-B8	Dimension Lumber: 2x12 (3)	SYP #1
2WB-B9	Dimension Lumber: 2x12 (3)	SYP #1
2WB-B10	Dimension Lumber: 2x12 (3)	SYP #1
2WB-B11	Dimension Lumber: 2x12 (3)	SYP #1
2WB-B12	Dimension Lumber: 2x12 (3)	SYP #1
2WB-B13	Dimension Lumber: 2x12 (3)	SYP #1
2WB-B14	Dimension Lumber: 2x10 (2)	
2WB-B15	Dimension Lumber: 2x10 (2)	
2WB-B16	Dimension Lumber: 2x10 (2)	
2WB-B17	Dimension Lumber: 2x10 (2)	
2WB-B18	LVL-Laminated Veneer Lumber: (2) 3/4 x 9 1/4	FLUSH

3WB-A-1	Dimension Lumber: 2x12 (3)	SYF #1
3WB-A-2	Dimension Lumber: 2x12 (3)	SYF #1
3WB-A-3	Dimension Lumber: 2x12 (3)	SYF #1
3WB-A-4	Dimension Lumber: 2x12 (3)	SYF #1
3WB-A-5	LVL-Laminated Veneer Lumber: (2) 3/4 x 9 1/4	FLUSH
3WB-A-6	Dimension Lumber: 2x12 (3)	SYF #1
3WB-A-7	Dimension Lumber: 2x12 (3)	SYF #1
3WB-A-8	Dimension Lumber: 2x12 (3)	SYF #1
3WB-A-9	Dimension Lumber: 2x12 (3)	SYF #1
3WB-A-10	Dimension Lumber: 2x12 (3)	SYF #1
3WB-A-11	Dimension Lumber: 2x12 (3)	SYF #1
3WB-A-12	Dimension Lumber: 2x12 (3)	SYF #1
3WB-A-13	LVL-Laminated Veneer Lumber: (2) 3/4 x 9 1/4	FLUSH
3WB-B-1	Dimension Lumber: 2x12 (3)	SYF #1
3WB-B-2	Dimension Lumber: 2x12 (3)	SYF #1
3WB-B-3	Dimension Lumber: 2x12 (3)	SYF #1
3WB-B-4	Dimension Lumber: 2x12 (3)	SYF #1
3WB-B-5	LVL-Laminated Veneer Lumber: (2) 3/4 x 9 1/4	FLUSH
3WB-B-6	Dimension Lumber: 2x12 (3)	SYF #1
3WB-B-7	Dimension Lumber: 2x12 (3)	SYF #1
3WB-B-8	Dimension Lumber: 2x12 (3)	SYF #1
3WB-B-9	Dimension Lumber: 2x12 (3)	SYF #1
3WB-B-10	Dimension Lumber: 2x12 (3)	SYF #1
3WB-B-11	Dimension Lumber: 2x12 (3)	SYF #1
3WB-B-12	Dimension Lumber: 2x12 (3)	SYF #1
3WB-B-13	LVL-Laminated Veneer Lumber: (2) 3/4 x 9 1/4	FLUSH

FOOTING MARK	DIMENSIONS		BOTTOM REINFORCING		REMARKS
	SIZE "W"	SIZE "T"	LONGITUDIN.	TRANSVERSE	
WF-2-0	2'-0"	1'-4"	(2) #5	#5 @ 12"	
WF-2-5	2'-6"	1'-4"	(3) #5	#5 @ 12"	
WF-3-0	3'-0"	1'-4"	(3) #5	#5 @ 12"	
WF-4-0	4'-0"	1'-4"	(5) #5	#5 @ 12"	

1

FOOTING MARK	DIMENSIONS		BOTTOM REINFORCING		REMARKS
	SIZE "W"	SIZE "T"	LONGITUD.	TRANSVERSE	
MUF-2.0	2'-0"	1'-4"	(2) #5	#5 @ 12"	
MUF-2.5	2'-6"	1'-4"	(3) #5	#5 @ 12"	
MUF-4.0	4'-0"	1'-4"	(5) #5	#5 @ 12"	
MUF-5.5	5'-6"	1'-4"	(6) #6	#5 @ 12"	

FOOTING MARK	DIMENSIONS		BOTTOM REINFORCING		PEDESTAL	REMARKS
	SIZE "W"	SIZE "T"	LONGITUDIN.	TRANSVERSE		
F-2.0	2'-0"	1'-4"	(2) #5	#5 @ 12"		
F-2.1	2'-1"	1'-4"	(2) #5	(2) #5	1'-1" 8Q	PEDESTAL 2'-0" HIGH W/ (4) #4 VERT & (2) #3 TIES
F-3.0	3'-6"	1'-4"	(3) #5	#5 @ 12"		
F-5.5	5'-6"	2'-0"	(1) #6	(1) #6		
F-5X3.5	5'-0" X 3'-6"	1'-4"	(6) #5	(6) #5	2'-5" 8Q FOR WC-B & 1'-9" 8Q FOR WC-C	PEDESTAL 2'-0" HIGH W/ (4) #4 VERT & (2) #3 TIES

CLEAR SPAN	HEADER	JACK STUDS	REMARKS
L < 3'-11"	(3) 2x8	2	
4'-0" ≤ L ≤ 4'-10"	(3) 2x10	2	
4'-11" ≤ L ≤ 6'-0"	(3) 2x12	3	
L ≥ 6'-0"	SEE PLAN		

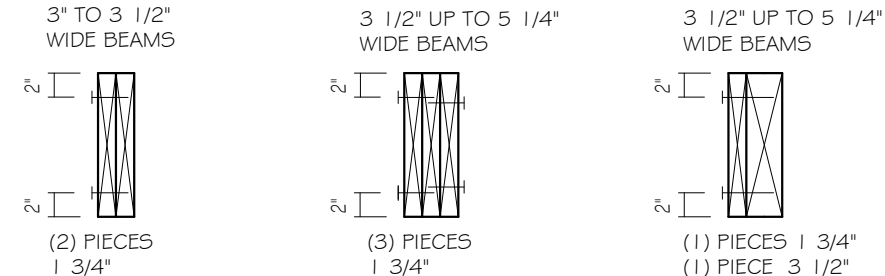
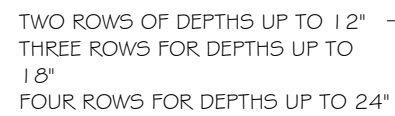


Diagram illustrating the components of a double door frame:

- DOUBLE PLATE
- DOUBLE HEADER
- CRIPPLE STUD
- CRIPPLE STUD
- PLATE
- DOUBLE STUD

© COPYRIGHT KEM ENGINEERS, INC.
THIS DRAWING AND ALL INFORMATION CONTAINED, INCLUDING ALL
RELATED DIGITAL DRAWINGS OR FILES HEREIN ARE THE EXCLUSIVE
PROPERTY OF KEM ENGINEERS, INC. SHALL NOT BE COPIED OR USED
IN ANY WAY WITHOUT THE EXPRESS WRITTEN CONSENT OF
KEM ENGINEERS, INC. AND MUST BE RETURNED UPON REQUEST.
ALL DRAWINGS ARE PRELIMINARY AND NOT FOR CONSTRUCTION
PURPOSES UNLESS SIGNED AND SEALED BY DANIEL J. COOREY, P.E.

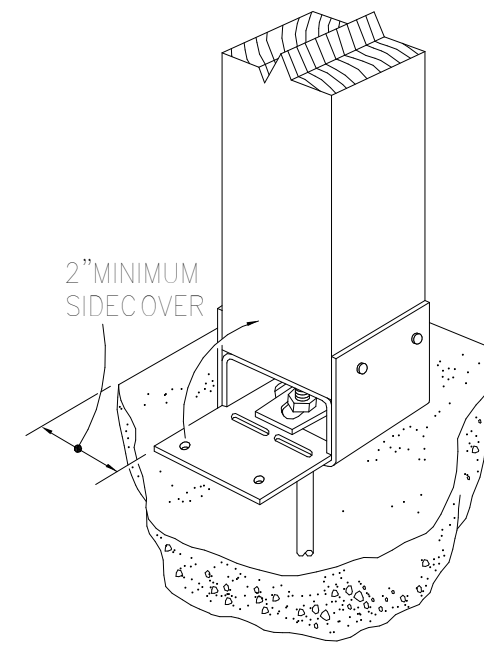
ISSUED	
DATE:	ISSUED FOR:
12-29-17	BUILDING PERMIT

[illegible]

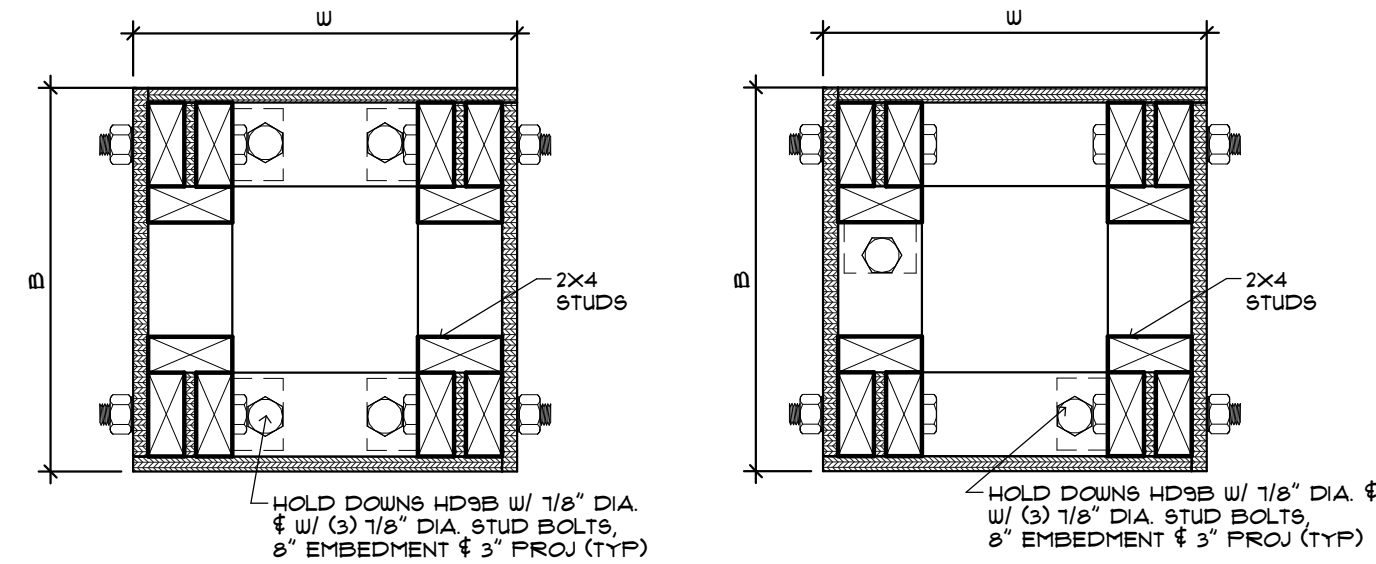
PROJECT NO:	15083.00
DRAWN BY:	KN
PROJECT MANAGER:	AW
CHECKED BY:	DJC
DATE:	12-29-17
SCALE:	NOT TO SCALE

S401

BUILDING '1' - BEAM,
FOOTING & COLUMN
SCHEDULE

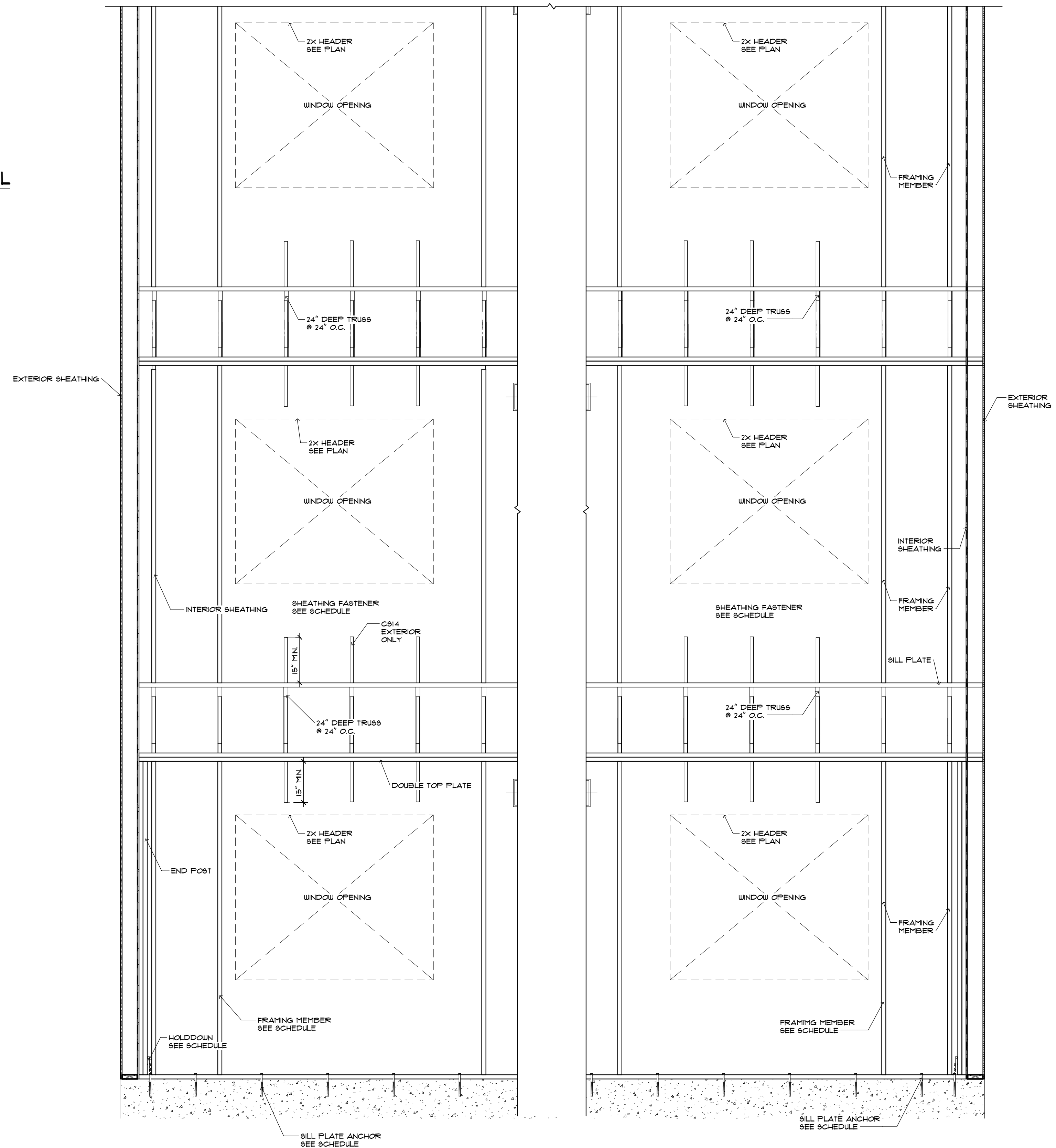


1 WC-3
1 1/2" = 1'-0"



$$\textcircled{2} \text{ WC-4} \quad \frac{1 \ 1/2'' = 1' - \theta''}{}$$

7 SHEAR WALL DETAIL
 $1/2'' = 1'-0''$

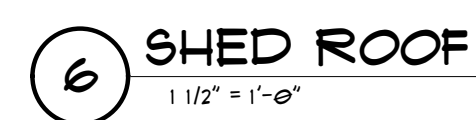
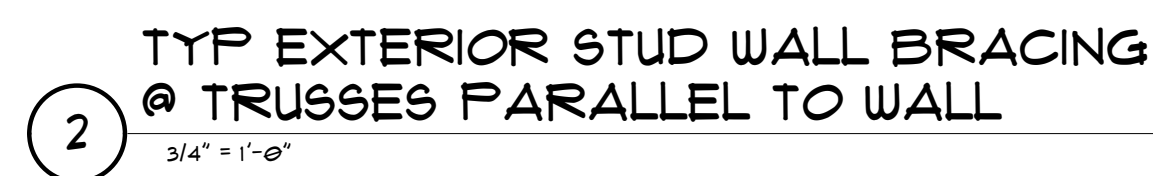


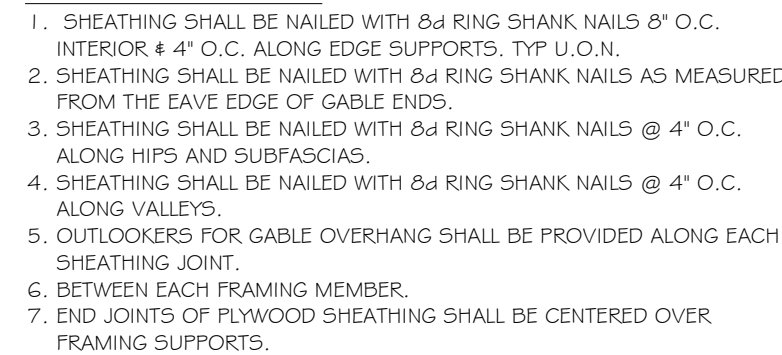
© COPYRIGHT KEM ENGINEERS, INC.
THIS DRAWING AND ALL INFORMATION CONTAINED, INCLUDING ALL
RELATED DIGITAL DRAWINGS OR FILES HEREIN ARE THE EXCLUSIVE
PROPERTY OF KEM ENGINEERS, INC. SHALL NOT BE COPIED OR USED
IN ANY WAY WITHOUT THE EXPRESS WRITTEN CONSENT OF
KEM ENGINEERS, INC. AND MUST BE RETURNED UPON REQUEST.
ALL DRAWINGS ARE PRELIMINARY AND NOT FOR CONSTRUCTION
PURPOSES UNLESS SIGNED AND SEALED BY DANIEL J. COOREY, P.E.

MHA - PALMS AT UNIVERSITY
APARTMENTS
PHASE II - BUILDING 1
585 E. UNIVERSITY BOULEVARD
MELBOURNE, FLORIDA 32901

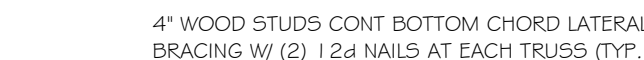
[illegible]

S402
BUILDING 1' - COLUMN &
SHEARWALL FRAMING
SCHEDULES AND
DETAILS



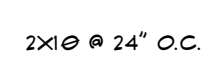


NOT TO SCALE


$$3/4^N = 1 - \theta^N$$


NOT TO SCALE


$$3/4^N = 1 - \theta^N$$

$$3/4^N = 1' - \theta'$$

$$3/4^N = 1 - \theta$$


PROFESSIONAL SEAL

© COPYRIGHT KEM ENGINEERS, INC.
THIS DRAWING AND ALL INFORMATION CONTAINED, INCLUDING
RELATED DIGITAL DRAWINGS OR FILES HEREIN ARE THE EXCLUSIVE
PROPERTY OF KEM ENGINEERS, INC. SHALL NOT BE COPIED OR
IN ANY WAY WITHOUT THE EXPRESS WRITTEN CONSENT OF
KEM ENGINEERS, INC. AND MUST BE RETURNED UPON REQUEST.
ALL DRAWINGS ARE PRELIMINARY AND NOT FOR CONSTRUCTION.
SUPERVISOR: [Signature] DATE: [Date] DRAWN BY: [Signature]

**MHA - PALMS AT UNIVERSITY
APARTMENTS
PHASE 11 - BUILDING 1**

ISSUED	
DATE:	ISSUED FOR:
12-29-17	BUILDING PERMIT

[illegible]

PROJECT NO:	15083.00
DRAWN BY:	KN
PROJECT MANAGER:	AW
CHECKED BY:	DJC
DATE:	12-29-11
SCALE:	AS NOTED

BUILDING '1' - ROOF FRAMING DETAILS